



TEXAS A&M UNIVERSITY  
Race & Ethnic Studies  
Institute

# ANNUAL REPORT

## Welcome

This year, we celebrate meaningful, transformative, and innovative research that significantly contributes to the field of race and ethnic studies. We've continued to push the boundaries of knowledge, addressing some of the most pressing challenges of today.

[resi.tamu.edu](http://resi.tamu.edu)

Cover



# 2023-24

# About Us

The Race & Ethnic Studies Institute is dedicated to **fostering, celebrating, and producing** cutting edge research related to race and ethnic studies among the community of scholars at **Texas A&M University** and beyond. We aim to be the premier research institute of its kind in Texas and the nation.

**The mission of our institute is to:**

- Highlight A&M's strengths and academic leadership in research relating to the study of race and ethnicity
- Support research and scholarship in the humanities, social and behavioral sciences that contribute to the study of race and ethnicity
- Advance interdisciplinary partnerships that pursue research aimed at understanding the salience of race and ethnicity
- Cultivate an intellectual environment that fosters supportive mentoring relationships between graduate students and faculty



## Our History

Founded in 1991, under the direction of former Texas A&M President William H. Mobley, RESI was established to highlight the university's **strengths** and **academic leadership** in research relating to the study of race and ethnicity.

As such, RESI serves as **a major research unit**, providing an organized structure to conduct research at various intersections such as class, gender, sexuality, education, immigration, politics, and culture. Dr. Gail E. Thomas (1991-98), professor of Sociology, and Dr. Mitchell F. Rice (1999-2004), professor of Political Science, founded and served as the first directors of the institute. Since then, RESI has continued to grow and work tirelessly to make meaningful advancements in research. Today, RESI is led by **Dr. Darrel Wanzer-Serrano**, associate professor of Communication & Journalism and core faculty of Latino/a & Mexican American Studies.



# Table of Contents

<b>Letter from our Director</b>	<b>1</b>
<b>Meet Our Team</b>	<b>2</b>
<b>Advisory Board</b>	<b>3</b>

<b>Our Impact at a Glance</b>	<b>4</b>
<b>Research Initiatives</b>	<b>5</b>
<b>Institute Affiliates</b>	<b>6</b>
<b>Working Groups</b>	<b>9</b>
<b>Faculty Colloquium Series</b>	<b>10</b>

<b>Grants &amp; Funding Opportunities</b>	<b>11</b>
<b>Interdisciplinary Faculty Seed Grant</b>	<b>12</b>
<b>Faculty Research Small Seed Grant</b>	<b>13</b>
<b>RESI Cantu Graduate Research Fellowship</b>	<b>15</b>
<b>Graduate Student Small Research Grant</b>	<b>16</b>
<b>Undergraduate Research Grant</b>	<b>18</b>
<b>Co-Sponsorships</b>	<b>19</b>

# Letter from our Director

It has been a true blessing to serve as the Race & Ethnic Studies Institute (RESI) Director for the last year. To play a small role in helping this institute establish new and re-establish old programs, increase the Institute's visibility, and cultivate a community in which nascent and established scholars doing critical race and ethnic studies scholarship can thrive—to play a part in all of that has been a highlight of my career.

This has been a year of tremendous growth for RESI. As of this writing, RESI's faculty affiliates have more than quadrupled with greater than 50 this year, and we've added about 30 graduate student affiliates in our new program. These affiliates, mailing list members, and scores of additional social media followers are among the first to learn about the happenings of RESI's 3 new working groups, faculty research colloquia, funded co-sponsorship events, and grant programs that target faculty, graduate students, and undergraduates.

RESI's programming has exceeded my expectations. Our grant programs have been particularly successful. RESI funded 14 faculty projects, 14 graduate student projects, and 2 undergraduate student projects—our most ambitious year on record. Additionally, our grants support interdisciplinarity in clear ways: RESI's research support efforts have gone to faculty and students in about two dozen different departments/units across nearly ten different schools/colleges at A&M. Furthermore, the events we have hosted or co-sponsored have enriched the intellectual lives of over 2,000 faculty, staff, students, former students, and members of the public.

All said, 2023-2024 was a fantastic year made possible by support from the College of Arts & Sciences, the Cantú Endowment, RESI's exemplary staff, and the faculty and students who have been actively engaged in and by all that we do. As Director, I look forward to all the exciting scholarship and intellectual engagement that the coming year will bring.

Sincerely,



**Darrel Wanzer-Serrano**, PhD (he/him)  
Director of the Race & Ethnic Studies Institute  
Associate Professor, Department of Communication & Journalism  
Core faculty in the Latino/a and Mexican American Studies Program



# Meet Our Team

Our talented team at RESI are a group of value-driven professionals who do their best to fulfill the mission and scope of the Institute. The only way to make progress is with great people.



**Aster Bains-Birkner** *(they/them)*  
Administrative Coordinator

Aster graduated from Texas A&M University with a Bachelor of Arts in English and a double minor in Communications and Classical Studies. Their passion lies in learning folklore and myths from as many cultures as possible.



**Mariana Rodriguez** *(she/ella)*  
Graduate Assistant Director

Mariana graduated from Texas A&M International University with a Master Of Arts in Communication and a Bachelor of Arts in English. She is currently a Doctoral Candidate with the Department of Communication & Journalism.



**Angela Mayorga** *(she/her)*  
Business Administrator

Angela graduated from Western Governors University with a Master of Business Administration and from Texas A&M University with a Bachelor of Science in Sociology. As RESI's Business Administrator she manages a wide range of financial activities.



**Alekzandra de la Rosa** *(she/her)*  
Social Media & Communications Intern

Alekzandra is pursuing a Bachelor of Science in Communications with a double minor in Business. She has years of experience in professional social media management and design. Alekzandra is a first-generation college student from Laredo, Texas.



**Armani Jones** *(she/her)*  
Social Media & Communications Intern

Armani is pursuing a Bachelor of Arts in Communications with a minor in Creative Studies. She is involved on campus and serves in a leadership position responsible for maintaining all aspects of communications. Armani is a first-generation college student from Cedar Hill, Texas.

# Advisory Board

Meet our 2023-24 Advisory Board, a group of distinguished faculty who play a crucial role in guiding and enhancing RESI's strategic direction, research priorities and overall impact. Their diverse expertise are vital to the continued success of the Institute.



**Pat Rubio Goldsmith**

Professor  
*Sociology*



**Rebecca Hankins**

Professor  
*Global Languages  
and Cultures*



**Daniel L. Howard**

Professor  
*Psychological and Brain  
Sciences*



**Alain Lawo-Sukam**

Associate Professor  
*Global Languages and  
Cultures*



**Kristan Poirot**

Associate Professor  
*Communication and  
Journalism*



**Asha Rao**

Instructional Professor  
*Biology*



**Vanita Reddy**

Associate Professor  
*English*



**Omar Rivera**

Associate Professor  
*Philosophy*



**George Villanueva**

Associate Professor  
*Communication and  
Journalism*

# Our Impact at a Glance

As we reflect on the past year, we remain steadfast in our mission to advance race and ethnic studies.

**2,000+** Intellectual lives enriched

Across faculty, staff, students, former students and community member through our **11 co-sponsorships**.

 3 Interdisciplinary Working Groups:



Our newly launched **Graduate Student Affiliate** program has over

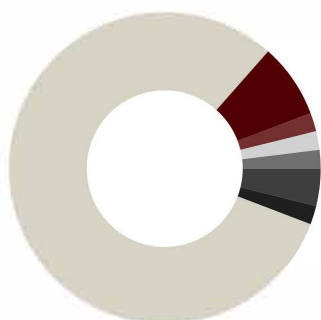
**30 members**

and is consistently growing...

The introduction of **new funding programs** led to an increase in research support:



Our **50+ Faculty Affiliates** come from **7 Colleges and Schools** across Texas A&M:



- Bush School of Government & Public Service
- College of Architecture
- College of Arts & Sciences
- College of Education
- College of Engineering
- College of Performance, Visualization & Fine Arts
- School of Public Health

A majority, **over 80%**, of our faculty affiliates come from the **College of Arts & Sciences**.



# Research Initiatives

This year we launched several new projects and partnerships establishing a cohesive research agenda centered around two primary research initiatives: the **Hispanic-Serving Institutions (HSI) Research Initiative** and the **Power & Inequality Research Initiative**.

## Hispanic-Serving Institutions (HSI)

On March 1, 2022, the United States Department of Education notified Texas A&M University – College Station that it has been designated as a Hispanic-Serving Institution (HSI). This research initiative has been formed in recognition of the opportunity we have to create transformative and translational research opportunities for students and faculty at Texas A&M University. We aim to be the hub for HSI-oriented research both in the College of Arts & Sciences and across the university

## Power & Inequality

Our understanding of inequality is framed within the presence of power and its complex organization. The inequality system works by suggesting that the current conditions of society are naturally reproduced. In this view, inequality is reduced to an experience independent of the external forces that enact it. This research initiative has been formed in recognition of the persistent and harmful effects of inequality throughout society. The research projects established within this initiative seek to identify, understand, and interrogate barriers to more equitable social relations and structures.



**Are you engaging in research that aligns with our research initiatives?** We're always eager to support research and interdisciplinary collaboration. Contact us at [resi@tamu.edu](mailto:resi@tamu.edu).

## RESI-Lead Research Projects

### *The Anti-DEI Legislation Impact Study at Hispanic-Serving Institutions (ADLIS-HSI)*

**ADLIS-HSI** is a project that seeks to measure the impact of recent legislative efforts across the country (including, but not limited to, Texas and Florida) to defund DEI programs, practices, and infrastructure in public four-year (particularly research-intensive) HSIs.

### *The Emerging Visions of Learning, Voices, & Equity at HSIs (EVOLVE HSIs) Study*

**EVOLVE HS** Is is a project that uses a discourse tracing method to analyze the communications of three emerging Hispanic-Serving Institutions (eHSIs) in the University of Texas System: UT Austin, UT Dallas, and UT Tyler. This research draws from institutional websites, personal correspondence, and constituent interviews to frame this research.





# Institute Affiliates

We are dedicated to supporting transformative research that advances race and ethnic studies – a mission that requires an intellectual environment cultivated by interdisciplinary partnerships. At the heart of our institute are our esteemed affiliates, a diverse group of scholars and experts whose interdisciplinary expertise drive our mission forward. Our affiliates, faculty and graduate students, are dedicated to the study of race and ethnicity, an area that presents critical and complex issues confronting the state and nation

## Faculty Affiliates

Faculty, regardless of rank, are eligible to be RESI Faculty Affiliates. Each affiliate plays a crucial role in our Institute as they engage in pioneering research projects, mentor the next generation of scholars, and contribute to thought leadership through publications, conferences, and public engagements. We are proud to introduce our faculty affiliates whose efforts exemplify the core values of our institute.

## Graduate Student Affiliates

Graduate students, both master's and doctoral level, are eligible to be RESI Graduate Student Affiliates. Our program aims to cultivate relationships between students and faculty, bolster innovative research, and contribute to the development of budding scholars. Each graduate student affiliate contributes to the advancement of race and ethnic studies through their ongoing research initiatives.

# Faculty Affiliates

**Kristi Allgood**

Assistant Professor  
Epidemiology & Biostatistics

**Mindy Bergman**

Professor  
Psychological & Brain Sciences

**Albert S. Broussard**

Professor  
History

**Takkara Brunson**

Associate Professor  
History

**Mary Campbell**

Professor  
Sociology

**Ishara Casellas Connors**

Assistant Professor  
Public Service and Administration

**Adrian V. Chavana**

Assistant Professor  
History

**David Donkor**

Associate Professor  
Performance Studies

**Robert Durán**

Associate Professor  
Sociology

**Ira Dworkin**

Associate Professor  
English

**Amy Elizabeth Earhart**

Associate Professor  
English

**Joe Feagin**

Distinguished Professor  
Sociology

**Sarah Gatson**

Associate Professor  
Sociology

**Rebecca Hankins**

Professor  
Global Languages & Cultures

**Bryce Henson**

Assistant Professor  
Communication & Journalism

**Sonia Hernandez**

Professor  
History

**Brian Holzman**

Assistant Professor  
EAHR

**Daniel L. Howard**

Professor  
Psychological & Brain Sciences

**Ege Selin Islekel**

Assistant Professor  
Philosophy

**Amir Jaima**

Assistant Professor  
Philosophy

**Wendy Jepson**

University Professor  
Geography

**Congrui Grace Jin**

Assistant Professor  
ETID

**Koyel Khan**

Instructional Assistant Professor  
Sociology

**Nadia Kim**

Professor  
Sociology

**Antonio C. La Pastina**

Associate Professor  
Communication & Journalism

**Alain Lawo-Sukam**

Associate Professor  
Global Languages & Cultures

**Robert Mackin**

Instructional Professor  
Sociology

**Michelle Annette Meyer**

Associate Professor  
LAUP

**Allegra Midgette**

Assistant Professor  
Psychological & Brain Sciences

**Regina Mills**

Assistant Professor  
English

**Benjamin Kofi Nutor**

Assistant Professor  
Anthropology

**Portia Owusu**

Assistant Professor  
English

**Greggory Pappas**

Professor  
Philosophy

**Kristy Pathakis**

Assistant Professor  
Political Science

**Jasmin Patrón-Vargas**

Assistant Professor  
Teaching, Learning & Culture

**Meg Perret**

Assistant Professor  
Global Languages & Cultures

**Nancy Plankey-Videla**

Associate Professor  
Sociology

**Kristan Poirot**

Associate Professor  
Communication & Journalism

**Luis Ponjuán**

Associate Professor  
EAHR

**Jolene Ramsey**

Assistant Professor  
Biology

**Asha Rao**

Instructional Professor  
Biology

**Vanita Reddy**

Associate Professor  
English

**Omar Rivera**

Associate Professor  
Philosophy

**Pat Rubio Goldsmith**

Professor  
Sociology

**Emilce Santana**

Assistant Professor  
Sociology

**John Singer**

Associate Professor  
Kinesiology and Sport Management

**Kazuko Suzuki**

Associate Professor  
Sociology

**Jyotsna Vaid**

Professor  
Psychological & Brain Sciences

**George Villanueva**

Associate Professor  
Communication & Journalism

**Darrel Wanzer-Serrano**

Associate Professor  
Communication & Journalism

**Yiping Xia**

Assistant Professor  
Communication & Journalism

**Harry Yaojun Yan**

Assistant Professor  
Communication & Journalism

## Interested in becoming a Faculty Affiliate?

Our faculty affiliates engage in innovative research, regardless of rank, and have a strong interest in advancing race and ethnic studies.

Scan the QR code below to learn more about our program and complete the interest form to be added as an affiliate.



# Graduate Student Affiliates

Our newly launched program is an initiative designed to support and enhance the research capabilities of graduate students (both master's and doctoral level).

**James Baldwin**

Doctoral Candidate  
Sociology

**Hannah Bowling**

Doctoral Candidate  
English

**Dyamon Brown**

Doctoral Student  
Psychological & Brain Sciences

**Peggy Sue Carris**

Doctoral Candidate  
Sociology

**Marissa Castillo**

Doctoral Candidate  
EAHR

**Alondra Ceballos**

Doctoral Student  
English

**Sanchita Chakraborty**

Doctoral Student  
Geography

**Megan Crutcher**

Doctoral Candidate  
Anthropology

**Yair Andre Cuenú-Mosquera**

Doctoral Candidate  
Global Languages & Cultures

**Akshara Dafre**

Doctoral Student  
English

**Anand Dalta**

Doctoral Student  
Geography

**Dalvin Dunn**

Doctoral Student  
EAHR

**Char Farfadet**

Doctoral Student  
Anthropology

**Daniel Gómez-Vásquez**

Doctoral Candidate  
Economics

**Joseline Gonzalez-Ajanel**

Doctoral Student  
English

**Anthony Jackson**

Doctoral Student  
Sociology

**Kevin Johnson**

Doctoral Candidate  
Anthropology

**Mark Mallory**

Doctoral Student  
History

**Pujarinee Mitra**

Doctoral Student  
English

**Cristina Nader**

Doctoral Student  
EAHR

**Emma Newman**

Doctoral Candidate  
Anthropology

**Paula Ochoa**

Doctoral Candidate  
Sociology

**Mikayla Renwick**

Doctoral Student  
Communication & Journalism

**G Santee Riley**

Doctoral Student  
Sociology

**Mariana Rodriguez**

Doctoral Candidate  
Communication & Journalism

**Leslie Torres**

Doctoral Student  
History

**José Valdez**

Doctoral Student  
EAHR

**Vanessa Verner**

Doctoral Candidate  
Sociology

**Jacqueline White**

Doctoral Student  
EAHR

**Zhuldyz Zhumashova**

Doctoral Student  
Anthropology

## KEY PROGRAM FEATURES

### Requirements for Affiliation

- Complete the RESI Graduate Student Affiliate Form.
- Be registered and in good standing in a graduate program at Texas A&M.
- Plan to complete the annual renew form for affiliation.

### Opportunities with Affiliation

- Connect and network with graduate students and faculty across A&M.
- Participate in workshops and receive constructive feedback from faculty.
- Reserve work room space at RESI for writing groups or team meetings.
- Promotion of publications, conference acceptances or awards.
- Co-sponsorship, aimed at publicity support, for job talks or presentations.
- Profile and picture displayed on our website as a Graduate Student Affiliate.



### Interested in becoming a Graduate Student Affiliate?

Scan the QR code to learn more about the program and complete the interest form to be added as an affiliate.

# Working Groups

## Cross-Disciplinary Collaboration

Our working groups build networks and camaraderies while focusing on advancing research tied to race and ethnic studies.

### 1 ASIAN AMERICAN DIASPORA STUDIES

This working group builds upon existing research and teaching interests in “Asian American Belonging,” a thematic focus that is gaining traction in the **College of Arts & Sciences**. It aims to examine Asian American community formations, legal and cultural citizenship, and past and contemporary forms of anti-APIA racism, including intersectional forms of racism at the intersections of gender, sexuality, religion, ability, class, and other social identities.



**Co-Directors: Nadia Kim, Vanita Reddy, George Villanueva**

### 2 ENVIRONMENTAL JUSTICE

This working group is a special collaboration between the Environment & Sustainability Initiative and RESI which seeks to advance interdisciplinary environmental justice research and teaching in the **College of Arts & Sciences**. It will take an interdisciplinary lens to examine how environmental disparities, resource dispossession, and marginalization impact the everyday lives, experiences, and livelihoods of disadvantaged social groups and communities.



**Co-Directors: Wendy Jepson, Darrel Wanzer-Serrano**

### 3 HISPANIC-SERVING INSTITUTIONS (HSIS)

This working group builds upon existing research related to HSIs within the College of Arts & Sciences and across other colleges and schools at Texas A&M University. Functioning as a key component of **RESI's HSI Research Initiative**, this working group will facilitate new connections between researchers, review and support the state-of-the-art in HSI research, and champion research that supports the HSI mission and commitments of the College and the University.



**Co-Directors: Omar Rivera, Ishara Casellas Connors**

**Interested in exploring complex issues from an interdisciplinary perspective?**

**Propose a working group.** Our working groups provide space, structure, and discretionary funding for groups led by faculty with a shared intellectual interest related to race and ethnic studies.



# Faculty Colloquium Series

We host faculty colloquia featuring experts across diverse disciplines in the College of Arts & Sciences and across Texas A&M University



## State Systems and the Advancement of Servingness at eHSIs

Dr. Ishara Casellas Connors, Assistant Professor, Bush School of Government & Public Service

Dr. Darrel Wanzer-Serrano, Associate Professor, Communication & Journalism  
Mariana Rodriguez, Doctoral Candidate, Communication & Journalism

## On the Limits of Intersectionality and Black (Male) Feminism

Dr. Amir Jaima, Assistant Professor, Philosophy

## Black Male Athletes' Education Matters

Dr. John N. Singer, Associate Professor, Sport Management

## Invisibility & Influence

Dr. Regina Mills, Assistant Professor, English

## Global Intimacies

Dr. Vanita Reddy, Associate Professor, English



# Overview Grants and Funding Opportunities

We support research projects without regard to methodological or paradigmatic orientation. Located within the College of Arts & Sciences, we recognize the value in approaching race and ethnic studies from all scholarly starting points. We offer a variety of funding opportunities – including grants, fellowships, and sponsorships – that support the advancement of race and ethnic studies.



## Event Co-Sponsorship

We support events that further our mission. This type of funding program supports public lectures and other research-focused public engagements by visitors from outside the university who engage in research that fits within our mission and scope. Requests of up to \$500 may be made. Multiple awards cycles available throughout the academic year.

## RESI-Cantu Graduate Research Fellowship

This fellowship is a partnership between RESI and the Carlos H. Cantú Endowment & Scholarship Fund. This is a dissertation research fellowship to support the research enterprise leading to successful completion of the dissertation or a significant component thereof. This award is intended to provide students with grant-writing experience.

## Graduate Student Small Research Grant

This grant is available to master's and doctoral students. This is a major project grant to support the research enterprise leading to successful completion of some component of a doctoral dissertation, masters thesis, or major publication. Applicants should be advanced in their degree program and the project should be in an advanced state.

## Undergraduate Research Grant

This grant opportunity is available to undergraduate students. This is a major project grant to support the research enterprise leading to successful completion of some significant, faculty-directed project. Applicants should have a second, third, or four-year standing and are expected to work closely with a faculty member.

## Faculty Research Small Seed Grant

This grant opportunity is available to full-time faculty members for whom research is a formal component of their annual assessment. This award is designed to address a need for funding for a research that could not be accomplished otherwise in order to complete a book project, major article, or other equivalent research projects that makes an impact in race and ethnic studies in general

## Interdisciplinary Faculty Seed Grant

This grant opportunity is available to full-time faculty and researchers who have a terminal degree in their field/ This initiative supports one to two pilot projects per year. Projects must demonstrate collaboration between at least two department representatives (one of which must be in the College of Arts & Sciences. Proposals must include race and ethnicity as the central focus.



**Interested in our funding opportunities?**  
Scan the QR code to learn more about each program and how to apply.

# Interdisciplinary Faculty Seed Grant

## Unlocking Potential: Exploring Psychosocial Factors, Mental Health, Substance Misuse, and Help-seeking Behaviors among Hispanic Students at Texas A&M University

Alcohol and other substance use/misuse is common among college students in the United States (U.S.), with data often uncovering patterns of heavy substance use among the Hispanic college student undergraduate population. Additionally, symptoms of depression and anxiety are currently reported at the highest levels in recorded history among students from racial and ethnic minority backgrounds.

Despite these trends, Hispanic undergraduate college students rarely seek help for their substance use or mental health concerns, potentially impacting their health and wellbeing and their continued enrollment in school.

This study focuses on understanding the psychological and social factors, mental health challenges, substance use behaviors, and help-seeking tendencies among undergraduate Hispanic students at Texas A&M University, a U.S. Department of Education recognized Hispanic Serving Institution. The population for this study will consist of Hispanic undergraduate students aged 18 to 24 who are enrolled full time at Texas A&M University and reported alcohol use within the past year. Participants will take part in a mixed-methods (i.e., online survey and in-person interview) study. Findings can help inform future targeted prevention and intervention strategies tailored to this specific student population designed to address student well-being and enhance student retention and academic achievement.



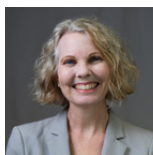
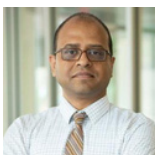
Benjamin N. Montemayor, PhD  
Assistant Professor,  
Department of Health Behavior  
Sergio Lemus, Assistant Professor,  
Anthropology

## Saving Hispanic mothers and newborns through early miRNA-Epigenetic indicators

Pregnancy can be a wonderful experience; however, it can be tarnished by complications including preeclampsia (PE).

Perilous PE is hypertension during pregnancy that can take the lives of both mother and child, leaving a heavy heart with the families. Even in cases of survival, there can be long-term health consequences for both mother and child.

There also exists racial and ethnic disparities in PE associated with high in-hospital cardiovascular events and mortality. Although much research has been conducted in the field, most is primarily done in non-Hispanic populations. We aim to improve the lives of Hispanic women via scientific parameters early at their pregnancy.



Mahua Choudhury, Assistant Professor, Pharmaceutical Sciences  
Samiran Sinha, Professor, Statistics  
Page Robin, Associate Professor, Nursing  
Theresa Morris, Associate Professor, Sociology

# Faculty Research Small Seed Grant

## **“THE MILLICAN MASSACRE: NEWSPAPER TRANSMISSION & THE EXTENSION OF RECONSTRUCTION RACIAL VIOLENCE”**

The RESI fellowship will support archival work in the American Antiquarian Society’s newspaper collection. This research will further my project that examines the Millican massacre, its transmission through newspapers, and its impact on the 1868 Presidential election.



**AMY EARTHART**  
Associate Professor, English

## **“SOCIOLOGY AND THE RACE PROBLEM: THE FAILURE OF A DISCIPLINE, AGAIN?”**

This is a cultural-intellectual history and analysis of mainstream sociology’s treatment of race and racism, namely the Asian American, Latine, and Middle Eastern/Muslim American experience. Dr. Kim evaluates the discipline’s aims and efforts to predict major societal patterns.



**NADIA KIM**  
Associate Professor, Sociology

## **“MONSTROUS VISIONS: MECHANISMS OF DEFENSE & REGIMES OF VISIBILITY”**

This project examines how the concept of monstrosity, an ostensibly imaginary concept, is a colonial category deployed racially to mark parts of the population as dangerous. Dr. Islekel traces a philosophical history of monstrosity from the perspectives in Contemporary Critical Theory, Decolonial Theory, and Philosophy of Race.



**EGE SELIN LSLEKEL**  
Assistant Professor, Philosophy

## **“GAMING LATINIDAD: CREATING A COLLECTION OF INTERVIEWS & ORAL HISTORIES OF LATINX GAME DEVELOPMENT”**

“Gaming Latinidad” would support a book of interviews with Latinx game developers and those who have written Latinx characters and/or narratives in games. These interviews would provide primary sources for researchers wanting to know more about how games imagine and create Latinx characters, stories, and environments.



**REGINA MILLS**  
Assistant Professor, English

## **RESEARCH SPOTLIGHT**

### **“NUESTRA HISTORIA: A PUBLIC HISTORY & PUBLIC ART PROJECT”**

Nuestra Historia is a public history project that unites historical research and public art. The goal of this project is to create historical landmarks that excite the public and encourage people to learn and think critically about the history that surrounds them.



**SARAH MCNAMARA**  
Assistant Professor, History

*Dr. McNamara’s research examines the histories of Latinxs, women and gender, race and ethnicity, immigration, and labor in the modern United States.*



# FALL 2023 - SPRING 2024

## “ECHOES OF EXCLUSION: IDENTIFYING THE CAUSES & CONSEQUENCES OF AMERICANS’ NON-BELONGING”

The echoes of political exclusion are still evident throughout politics for historically excluded groups. With this project, Dr. Pathakis will develop a theory of political belonging uncertainty that identifies the types of individuals for whom belonging is likely to be especially important and consequential.



**KRISTY PATHAKIS**  
Assistant Professor, Political Science

## “ETHNIC STUDIES IN THE TIME OF EXPANSION: A MULTI-STATE ANALYSIS OF ETHNIC STUDIES K-12 COURSES”

Over the last decade, more than a dozen states have introduced statewide legislation supporting K-12 ethnic studies. This research will address how K-12 teachers respond to ethnic studies mandates and the pedagogical practices teachers employ to translate ethnic studies mandates



**JASMIN PATRÓN-VARGAS**  
Assistant Professor, TLAC

## “TOWARDS A NEW THEORY OF RETURN MIGRATION: UNDERSTANDING FACTORS THAT LEAD TO RETURN HOMEMAKING”

What does reintegration mean in an age of mass migration and deportation? I propose a subject-centered approach that takes seriously what matters to subjects, the need to feel rooted and make meaning, a theory of return homemaking.



**NANCY PLANKEY-VIDELLA**  
Associate Professor, Sociology



### Thinking about applying for a Faculty Research Small Seed Grant?

The primary objective of this grant is to **advance original existing research.**

We recognize that a pivotal part of completing research is receiving the adequate support to navigate unforeseen challenges. That’s why we offer this grant twice an academic year.

We **welcome** applications from diverse disciplines and methodologies.

## RESEARCH SPOTLIGHT

### “CONSERVATION BIOLOGISTS AND THE U.S.-MEXICO BORDER WALL”

This book project explores the history of conservation biologists who have advocated for environmental justice in the U.S.-Mexico borderlands in the late twentieth and early twenty-first centuries.



**MEG PERRET**  
Assistant Professor,  
Global Languages & Cultures

*Dr. Perret is an interdisciplinary scholar. Her research examines how narratives about nature shape our collective futures.*

# RESI-Cantú Graduate Research Fellowship

## **AFROURBANITE COMMUNITIES: REPRESENTATION AND (DE) CONSTRUCTION OF THE AFRO EXPERIENCE IN URBAN CONTEXTS IN AFRO-COLOMBIAN LITERATURES**

Black characters in urban settings in Colombian literature have been depicted as immigrants, transients, and passing subjects, thus questioning their citizenship. Using Africana theoretical framework, ethnic-racial framing and what he calls “afrourbanite communities” (Comunidad afrourbanita in Spanish), Yair’s dissertation project deconstructs that affirmation and presents new ways of reading black experiences in urban settings. The essence of this proposal lies in the awareness of the potential of the representations of Afro experiences in literary pieces that later become a sufficiently powerful reference to determine social perceptions on such transcendental issues as the idea of citizenship, or the aesthetic representations of the ideas of national identities and belonging.



**Yair André Cuenú-Mosquera**  
*Global Languages & Culture*

## **AMPLIFYING BLACK AND LATINX YOUTHS VOICES ON COMMUNITY CONCERNS, SOCIO-CULTURAL STRENGTHS, AND MENTAL WELLNESS IN THE SOUTHWEST: A PHOTOVOICE PROJECT**

This project will combine arts-based, qualitative, and participatory action research methods to explore the sociopolitical and mental health experiences of Black and Latinx youth

who live in under-resourced communities within Houston and Galveston, Texas. The project’s primary goal is to provide an outlet for Black and Latinx youth to share their lived experiences as both participants and co-researchers and empower them to become positive change agents within their communities. This project will aim to enable Black and Latinx youth to capture and reflect on their community’s cultural strengths and concerns, gain insight into their mental health needs, promote their critical consciousness about important community issues, and potentially reach policymakers and public servants who can be mobilized to help youth create impactful change within their communities.



**Robyn Douglas**  
*Clinical Psychology*

## **“SO BASE A HUE? A BEAUTEOUS BLOSSOM, SURE”: RACE AND IDENTITY IN SHAKESPEAREAN PERFORMANCE FROM THE EARLY MODERN TO THE POSTMODERN. GRANTS AND FUNDING OPPORTUNITIES**

Through historical, cultural, performance-based, and textual analysis Hannah read’s the dramatic, cinematic, and narrative works of Derek Walcott, Toni Morrison, Joe de Graft, Shakirah Bourne, Caryl Philips, Margo J Hendricks, and others. As artist-philosophers, these Black writers artfully employ Shakespeare’s global cultural capital from 1965 onward to engage their audiences in Black stories. By focusing on genre, she engages with Black storytelling as community- and culture-building

praxis—through careful genre choices, artist-philosophers either produce or withhold access to philosophical Blackness for their audiences



**Hannah Bowling**  
*English*

## **“NOT BY THE COMMISSION OF MEN’S HANDS”: GENDER, RACE, AND CLASS POLITICS WITHIN BLACK PENTECOSTALISM**

Using a Black Feminist epistemological approach, Vanessa delves into how meaning-making affects gender politics within the Black Pentecostal community. Using focus groups and survey methods of members and affiliates of the COGIC, she gains their perspectives on women’s pastoral ordination and how people feel about women in the church broadly. Vanessa is expanding the literature on Black religious life and offers sociological research to provide more context about Black Pentecostals. Her work also provides a more critical insight into how contemporary gender and racial patterns within society manifest in the church over time.



**Vanessa Verner**  
*Sociology*

### **Are you soon to be ABD?**

Our fellowship has two award cycles (fall and spring). No matter when you defend your proposal, this fellowship is tailored to aid in the advancement of your dissertation.

# Graduate Student Small Research Grant

## UNDERSTANDING UNDERGRADUATE STUDENTS' EXPERIENCES OF BELONGING

Instances of racial discrimination often occur in U.S. higher education. Given that racial harm in higher education is linked to a variety of negative outcomes in higher education, there is a need to investigate both students' experiences of racism and the protective factors that contribute to their feeling supported to succeed within higher education



**MEGAN BODILY**  
*Doctoral Student  
Sociology*

## HIRING IN A DIVERSE LABOR MARKET: SPILLOVERS ACROSS MINORITY GROUPS

Daniel investigates whether hiring experiences with workers from one minority group have positive or negative spillovers on the hiring of workers from another minority group, and whether policies that may be effective in reducing bias against one minority group may prove ineffective, or even backfire, on a different minority group.



**DANIEL CAMILO GOMEZ VASQUEZ**  
*Doctoral Candidate  
Economics*

### SPOTLIGHT

Daniel's research interests lie in the economics of labor and education, with a special focus on hiring discrimination, employment dynamics multi-racial settings, and conflict resolution in diverse groups. He engages diverse methods, such as field experiments, survey and online data.

His dissertation is supported with a research grant by the Russel Sage Foundation, a foundation dedicated to strengthening social science research as a means to diagnose social problems.

## BLACK, NATIVE, AND OTHERWISE: RACE, GENDER, AND EMPIRE IN THE BLACK SEMINOLE DIASPORA

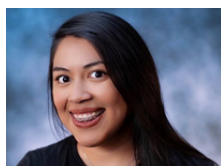
Mark's dissertation research is focused on interrogating, contextualizing, and unsettling formations of race, gender, and empire manifest in Black Seminole diaspora history since the 18th century.



**MARK MALLORY**  
*Doctoral Student,  
History*

## SECOND-HAND ILLEGALITY: EXPLORING BUREAUCRATIC EXCLUSION & RESOURCE INEQUALITY FOR U.S.-BORN LATINA/O CHILDREN OF UNDOCUMENTED PARENT

For this project, Jaqueline focuses on the exclusionary side of bureaucratic processes (such as federal financial aid, banking procedures, etc.) that create inequalities in the distribution of resources to the citizen children of undocumented parents. Specifically, she is examining different process that deny or delay services and resources to the Latina/o citizen children of undocumented parents due to required parental attachment.



**JAQUELINE MENDEZ**  
*Doctoral Student  
Sociology*

### SPOTLIGHT

Jaqueline explores the realities of undocumented immigrants and their U.S.-born children as it relates to experiences of illegality. Her research intersects race, class and migration.

She is consistently and actively presenting her research at various regional and local conferences, such as the Southwestern Social Science Association Annual Meeting, and the Southern Sociological Society Annual Meeting.

## EXPLORING THE EXPERIENCES OF FIRST-GENERATION, LOW-INCOME STUDENTS OF COLOR WITH MICROAFFIRMATIONS AT PWIS

The purpose of this study is to understand how FGLI undergraduate Students of Color experience microaffirmations as a response to microaggressions at predominantly white institutions (PWIs). Specifically, Cristina asks: What microaffirmations do FGLI undergraduate Students of Color encounter, if any, at PWIs?



**CRISTINA NADER**  
*Doctoral Student,  
EAHR*

### SPOTLIGHT

Cristina is a student in Higher Education Administration. She draws on her past experiences as a practitioner to inform her research which investigates the experiences of marginalized students, such as first-generation and low-income.

She is an advocate for and a practitioner of holistic student development, a strategy that values the development of physical, intellectual, emotional, cognitive, and social abilities.

Her past accomplishments as a higher education professional fuel her passion to uplift underrepresented students.

## Did you know this past year we supported the most graduate student-led projects in our institute's history?

Our grants enable students to contribute original research to the field of race and ethnic studies.

Applying for our grants provides valuable experience in budgeting, and grant writing - all which are crucial skills for a successful research career.

# Graduate Student Small Research Grant

## MIGRANT NECRO-RUTAS: MANIFESTATIONS OF VIOLENCE AGAINST MIGRANTS IN SOUTH TEXAS

This dissertation addresses the primary research questions of how state violence manifests in borderland regions, how this violence physically impacts migrant bodies (pre and post-mortem), how local borderland residents are affected by these events, what intersectional processes influence migrant travel trajectories, and what happens to migrant remains after an individual has passed on.



**EMMA NEWMAN**

*Doctoral Candidate, Anthropology*

### SPOTLIGHT

Emma's research centers borderlands (in theory, enforcement, and policy) and migration along the U.S./Mexico border. Her current work is anchored in South Texas and incorporates contemporary border and migration studies.

She is an accomplished researcher having received grants from the Melburn G. Glasscock Center and was recently named a Crossing Latinidades Fellow (funded by the Mellon Foundation) with the University of Illinois Chicago.

## THE TRANSBORDER LIFESTYLE: STUDYING, PARENTING, AND SCHOOLING ACROSS BORDERS

This study uses transborder or transfronterize to describe people who experience this social phenomenon. Existing research has focused on transborder college students and post-secondary schools. This gap urges us to explore the effects of Transborderism on younger students, their families, and the K-12 education system.



**PAULA MICHELLE OCHOA TREVINO**

*Doctoral Candidate, Sociology*

## NOWI'MAPRBLEMxSOMOSAPBLEM

NowI'mAPRBLEMxSomosAPRBLEM(NIA/SA) is a multimodal arts-based research project that builds a community archive, centralizing the stories and histories of Black, Latinx, and Indigenous women who live at the intersection of their race, gender, class, and sometimes sexuality outside of the purview of oppressive power relations.



**JORDAN NIXON**

*Graduate Student, CMJR*

## BLACK PLACEMAKING GEOGRAPHIES: THE DEVELOPMENT OF COMMUNITIES

This research engages the possibility that Black urban and suburban communities are actively mimicking the Slave Ship. Drawing on scholars such as Katherine Mckintrick, Marcus Hunter and George Massey Mikayla intends to examine the depth of how racist beliefs, practices and attitudes that flourished on the slave ship are now engrained in Black space, place, and geography.



**MIKAYLA RENWICK**

*Doctoral Student, CMJR*

### SPOTLIGHT

Mikayla's research is guided by the question, 'What helps or hinders the Black community's progression in the U.S.?'. She's particularly interested in the ways media portrays Black people and how such rhetoric influences those who consume it.

Her research centers the lived experiences of Black people to identify and understand the factors contributing to inequality. Through her research, Mikayla hopes to both empower the community she works with and develop strategies for social change.

Her research often bridges media, race, geography, and colonialism.

## CHALLENGING 'BAD SONS OF UNCLE SAM': ETHNIC MEXICAN ACTS OF RESISTANCE IN EARLY 20TH CENTURY TEXAS

This master's thesis seeks to understand how ethnic Mexicans in late nineteenth and early twentieth century Texas developed socio-political identities in response to state and vigilante violence against their ethnic community.



**LESLIE TORRES**

*Doctoral Student, History*

### SPOTLIGHT

Leslie's research explores the racialization and self-identification of ethnic Mexicans in twentieth century Texas, especially in relation to transborder communities, state-sanctioned racial violence, and civil rights activism.

A developing research project of hers plans to highlight the roles of ethnic Mexican women in greater national movements and racial hierarchies in the U.S. and Mexican Progressive Era.

Outside of research, Leslie is an active participant in the Glasscock sponsored working group, Immigration, Migration, and Ethnicity. She also serves in a leadership position, as a Communications Officer, for the History Graduate Student Organization.

## Do you have a research project in need of support?

This grant is designed to aid in the completion of an **original existing research project**.

Applications from diverse disciplines and methodologies welcomed.

We're here to **advance research** that leads to meaningful impact and innovation within race and ethnic studies.

# Undergraduate Research Grant



**DIEGO  
SEPULVEDA-ALLEN**

## **MEXICAN AMERICANS, IDENTITY POLITICS, AND ETHNIC PANDERING IN SOUTH TEXAS, 1945-1985**

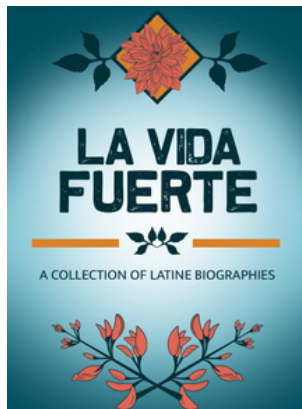
This research project investigates how Mexican-Americans race and ethnicity were used to gain power by candidates, their supporters, and interest groups in South Texas politics between 1945-1985. By analyzing contemporary newspapers, campaign materials, letters, politician's correspondence, flyers, speeches, interviews, and other primary materials from these political actors, this thesis examines how they used the ethnic identity of Mexican Americans in their political messaging to mobilize voters in South Texas.



**VERONIKA CROAN**

## **EXPLORING PERCEIVED BURDEN, THWARTED BELONGING, AND ACADEMIC SUCCESS AMONG BLACK AND LATINX COLLEGE STUDENTS: A STUDY ON MENTAL HEALTH AND SOCIOECONOMIC FACTORS**

This project aims to explore the relationship between perceived burdensomeness, mental health, and academic achievement among Black and Latinx college students. Through surveys and regression analyses, it investigates how perceived burdensomeness affects mental health outcomes and academic success, aiming to inform targeted interventions for the students well-being and academic advancement.



## **THE STUDENTS OF HIST/LMAS 307, FALL 2023 TEXAS A&M UNIVERSITY**

LA VIDA FUERTE: A COLLECTION OF LATINE BIOGRAPHIES

This insightful compilation delves into the rich and diverse lives of notable figures such as Macario García, the first Latino ever given the US Medal of Honor ; Carmen Miranda, the multifaceted, Brazilian, entertainer who rose to popularity and brought comfort to many in an environment of revolution, depression, and world war; and Sylvia Mendez, who played an essential role in the case Mendez v. Westminster. Each biography in this collection serves as a testament to resilience, cultural pride, and the enduring impact of Latine individuals on history and society.

# Co-Sponsorships



**Baginski, A.J. "Landscapes of Belonging: Poetry Workshops and Recital."**

Glasscock Center for Humanities Research.  
9/21/23. Estimated attendance: 100

**Campbell, M. "Lore Fest."**

School of Performance, Visualization & Fine Arts.  
10/26/23. Estimated attendance: 300

**Cuenu, Y. "Africa: The Spanish Language as a Place of Literary Enunciation."**

Dept. of Global Languages and Cultures.  
10/20/23. Estimated attendance: 40

**Annual MLK Jr. Breakfast.**

Texas A&M University.  
1/18/24. Estimated attendance: 712

**Connor, W. "Afrofuturism Explored!"**

School of Performance, Visualization & Fine Arts  
2/16/24-2/17/24. Estimated attendance: 75

**Lopez, J. "Music & Movie Making in Texas - Creating Community."**

Dept. of Communication & Journalism.  
2/24/24. Estimated attendance: 70



**Grigsby, P. History Graduate Student Organization Annual Conference.**

Dept. of History.  
2/9/24-2/10/24. Estimated attendance: 150

**Marini, F. "Supporting Incarcerated Women Through Theater: The Medea Project."**

School of Performance, Visualization & Fine Arts.  
3/20/24. Estimated attendance: 40

**Baginski, A.J. "AftoLatinx Life and Writing Symposium."**

Glasscock Center for Humanities Research.  
2/29/24. Estimated attendance: 50

**Texas A&M Hispanic Network Annual Summit.**

Association of Former Students.  
4/5/24-4/6/24. Estimated attendance: 260

**Haefeli, E. "New Directions in African Studies."**

Dept. of History.  
3/8/24. Estimated attendance: 30



**Hosting an event that aligns with our scope and mission?**

Apply for a co-sponsorship by scanning the QR code. Multiple application cycles throughout the year.



TEXAS A&M UNIVERSITY  
Race & Ethnic Studies  
Institute



@tamuresi